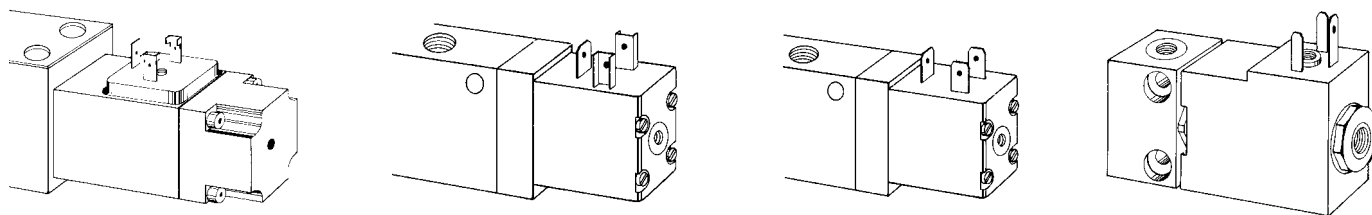


Valve pin formats



The simplest and most effective way to put a suppressor and LED on your solenoid valves...

... is a pre-molded adapter from Murrelektronik

Hydraulic and pneumatic systems are an integral part of most machines. The plug supplied is often not enough to meet the exacting standards many applications require. Suppression is necessary for the machines functionality and an LED vital for fault-finding and maintenance. Murrelektronik Solenoid valve

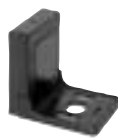
adapters with integrated LED offer a flexible range of products suited to a variety of different requirements. **For every valve, the correct network**

- Protects the control system using the optimal network
- LED in yellow, red and green on request
- Adapter polarity safe for all voltages
- Simple plug-on mounting without any wiring
- Suitable adapter for all standard valves

Self wireable and pre-wired valve connector with LED and suppression see chapter 1

Form A to DIN 43650 (ISO 4400)

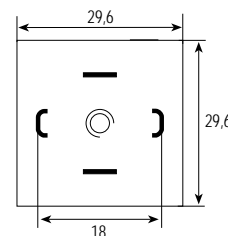
Pin spacing 18 mm, square
2-pole + 2 PE (bridged)



VBS



MLA



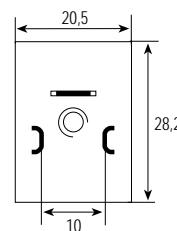
Page 3.6.2 and 3.6.5

Form B to DIN 43650 (ISO 6952)

Pin spacing 10 mm, narrow
2-pole + PE



DAB



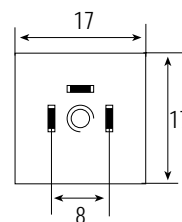
Page 3.6.3

Form C to DIN 43650

Pin spacing 8,0 mm,
2-pole + PE



MVK



Page 3.6.4

Industry standard

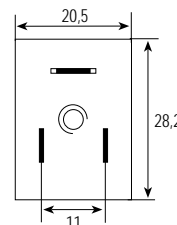
Pin spacing 11 mm, narrow
2-pole + PE



LBS



PBS



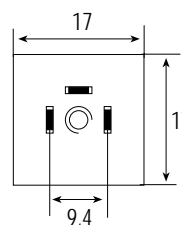
Page 3.6.2 and 3.6.3

Industry standard

Pin spacing 9,4 mm
2-pole + PE



MVT



Page 3.6.4

Solenoid valve adapters

with LED
with suppressor and LED



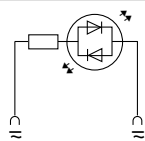
VBS
Form A
Pin spacing 18 mm
DIN 43650 (ISO 4400)



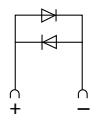
LBS
Pin spacing 11 mm
Industry standard



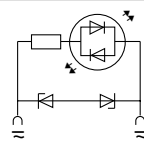
Circuit diagram



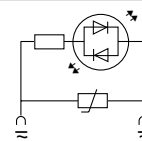
LED



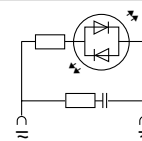
LED+Diode



LED+Z-Diode



LED+VDR



LED+RC

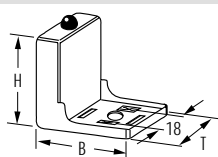
Ordering data

Voltage	Suppression	Art.-No.	Art.-No.	Switch off	Switch off	Valve
				delay time	voltage peak	hold-on rating
				[ms]	[V]	[W/VA]
24 V AC/DC	LED	¹⁾ 3124015	3124215	–	–	–
³⁾ 24 V DC	LED + Diode	¹⁾ 3124021	3124221	200	1	50
24 V AC/DC	LED + Z-Diode	¹⁾ 3124033	3124233	20	55	100
24 V AC/DC	LED + VDR	¹⁾ 3124048	3124248	15	45	50
24 V AC/DC	LED + RC	3124068		20	105	10
24 V AC/DC	LED + RC		3124269	20	70	20
48 V AC/DC	LED	¹⁾ 3124017	3124217	–	–	–
³⁾ 48 V DC	LED + Diode	¹⁾ 3124024		200	1	50
48 V AC/DC	LED + Z-Diode		3124234	20	75	100
48 V AC/DC	LED + VDR	¹⁾ 3124052	3124252	10	75	100
48 V AC/DC	LED + RC	²⁾ 3124071	3124271	20	90	30
110 V AC/DC	LED	3124018	3124218	–	–	–
110 V AC/DC	LED + VDR	3124046	3124246	10	235	100
110 V AC/DC	LED + RC	3124070	3124270	20	250	10
110 V AC/DC	LED + RC	²⁾ 3124072		20	250	25
110 V AC/DC	LED + RC			20	250	25
230 V AC/DC	LED	3124016	3124216	–	–	–
230 V AC/DC	LED + VDR	3124049	3124249	15	360	100
230 V AC/DC	LED + RC	3124063	3124263	20	300	10
230 V AC/DC	LED + RC	²⁾ 3124064		20	300	25

Technical data

Supply indicator	yellow LED (milky white when unlit)
Contact material	silvered bronze
Protection	IP 65 when fully mounted
Material	black polyamide, flame retardant, temp. resist. up to 130 °C
Temperature range	-20...+60 °C

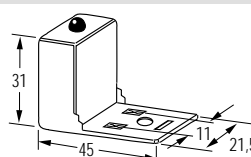
Dimension drawing



Housing H x B x T: 37 x 45 x 30 mm

¹⁾ Housing H x B x T: 37 x 39 x 30 mm

²⁾ Housing H x B x T: 37 x 53 x 33 mm



Note pin arrangement (PE at cable outlet of connector)

180° version on request

Notes

Do not use plug gasket when fitting adapter. Other LED colors on request.
For double valves the VA 2 series is suitable (please inquire). ³⁾polarity dependent

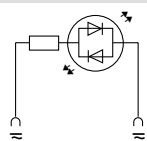
with LED
with suppressor and LED

PBS
Pin spacing 11 mm
Industry standard

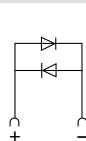
DAB
Form B
Pin spacing 10 mm
DIN 43650 (ISO 6952)



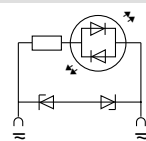
Circuit diagram



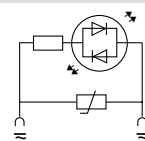
LED



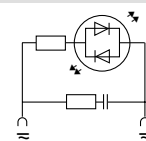
LED+Diode



LED+Z-Diode



LED+VDR



LED+RC

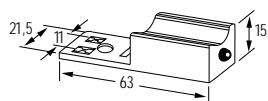
Ordering data

Voltage	Suppression	Art.-No.	Art.-No.	Switch off delay time [ms]	Switch off voltage peak [V]	Valve hold-on rating [W/VA]
24 V AC/DC	LED	3124115	3124875	–	–	–
¹⁾ 24 V DC	LED + Diode	3124121	3124871	200	1	50
24 V AC/DC	LED + Z-Diode	3124133	3124873	20	55	100
24 V AC/DC	LED + VDR	3124148		15	45	50
24 V AC/DC	LED + RC	3124169		20	70	20
48 V AC/DC	LED	3124117		–	–	–
¹⁾ 48 V DC	LED + Diode			200	1	50
48 V AC/DC	LED + Z-Diode		3124874	20	75	100
48 V AC/DC	LED + VDR	3124152		10	75	100
48 V AC/DC	LED + RC	3124171		20	90	30
110 V AC/DC	LED	3124118	3124878	–	–	–
110 V AC/DC	LED + VDR	3124146	3124876	10	235	100
110 V AC/DC	LED + RC	3124170	3124870	20	250	10
230 V AC/DC	LED	3124116	3124886	–	–	–
230 V AC/DC	LED + VDR	3124149	3124879	15	360	100
230 V AC/DC	LED + RC	3124163	3124883	20	300	10

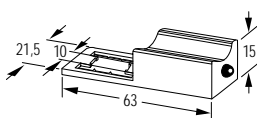
Technical data

Supply indicator	yellow LED (milky white when unlit)
Contact material	silvered bronze
Protection	IP 65 when fully mounted
Material	black polyamide, flame retardant, temp. resist. up to 130 °C
Temperature range	-20...+60 °C

Dimension drawing



Note pin arrangement (PE at cable outlet of connector) 180° version on request.



Suitable for 0 and 180° installation

Notes

Do not use plug gasket when fitting adapter. Other LED colors on request.
RT-angle housing version with 10 mm pin spacing (DAR/DARU), on request. ¹⁾ polarity dependent

Solenoid valve adapters

with LED
with suppressor and LED



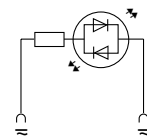
MVT
Pin spacing 9,4 mm
Industry standard



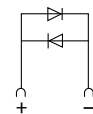
MVK
Form C
Pin spacing 8,0 mm
DIN 43650



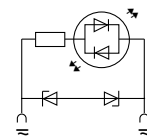
Circuit diagram



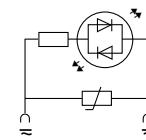
LED



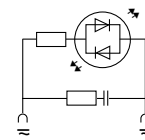
LED + Diode



LED + Z-Diode



LED + VDR



LED + RC

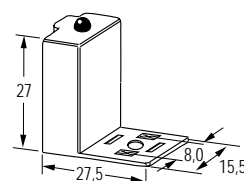
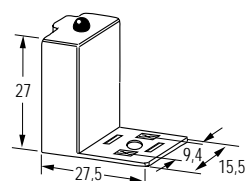
Ordering data

Voltage	Suppression	Art.-No.	Art.-No.	Switch off delay time [ms]	Switch off voltage peak [V]	Valve hold-on rating [W/VA]
24 V AC/DC	LED	3124815	3124811	-	-	-
¹⁾ 24 V DC	LED + Diode					
24 V AC/DC	LED + Z-Diode	3124832	3124833	20	55	100
24 V AC/DC	LED + VDR					
24 V AC/DC	LED + RC					
48 V AC/DC	LED	3124817	3124813	-	-	-
¹⁾ 48 V DC	LED + Diode					
48 V AC/DC	LED + Z-Diode		3124835	20	75	100
48 V AC/DC	LED + VDR					
48 V AC/DC	LED + RC					
110 V AC/DC	LED					
110 V AC/DC	LED + VDR	3124851	3124840	10	235	100
110 V AC/DC	LED + RC					
230 V AC/DC	LED					
230 V AC/DC	LED + VDR		3124841	15	360	100
230 V AC/DC	LED + RC					

Technical data

Supply indicator	yellow LED (milky white when unlit)
Contact material	silvered bronze
Protection	IP 65 when fully mounted
Material	black polyamide, flame retardant, temp. resist. up to 130 °C
Temperature range	-20...+60 °C

Dimension drawing



Notes

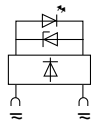
Do not use plug gasket when fitting adapter. Other LED colors on request.
¹⁾ polarity dependent

Adapter with integrated LED

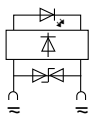
MLA
Pin spacing 18 mm



Circuit diagram



LED + Z-Diode



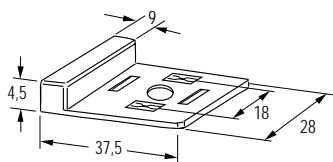
LED + Suppressor

Ordering data		Art.-No.	Art.-No.	Art.-No.	Art.-No.
Output rating					
Yellow LED	30 W	3124680			
Yellow LED	60 W		3124681		
Green LED	30 W			3224680	
Green LED	60 W				3224681

Technical data

Supply indicator	yellow LED			green LED	
Nominal voltage	24 V AC/DC				
Contact material	silvered bronze				
Material	PUR				
Temperature range	-20...+60 °C	-20...+80 °C	-20...+60 °C	-20...+80 °C	
Dimensions	H x W x D	2,2 (4,5) x 37,5 x 28 mm			

Dimension drawing



Gasket thickness: 2.2 mm

Notes