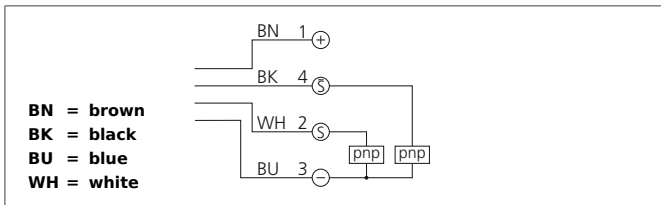


# US 60 K 2500 PSS-TSSL

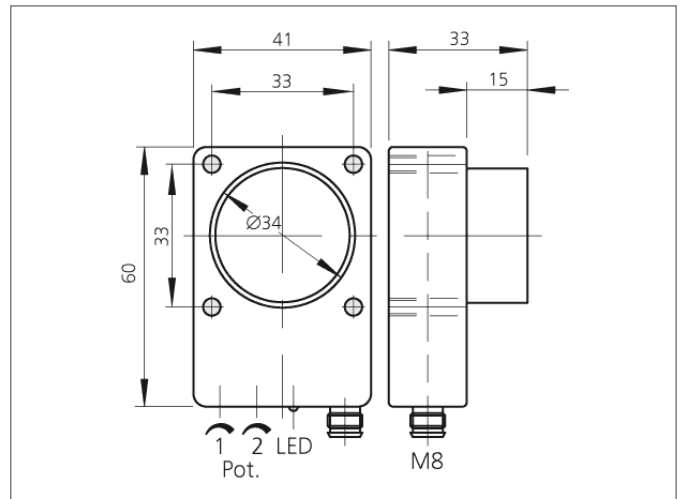
## Ultrasonic Sensor

- Robust casing
- Compact design
- Scanning range adjustable
- Insensitive to dirt
- Insensitive to ambient noise
- Scanning does not depend on surface
- Switching output
- High resolution
- Piezo-ceramic composite transducer



### Safety instructions

The Instruments are not to be used for safety applications, in particular applications in which safety of persons depends on proper operation of the instruments.  
 These instruments shall exclusively be used by qualified personnel.  
 Repair only by di-soric.



| TECHNICAL INFORMATION        |  | +20°C, 24V DC                   |
|------------------------------|--|---------------------------------|
| Operating principle          |  | Ultrasonic sensor               |
| Size                         |  | 60 x 41 x 33 mm (Dimensions)    |
| Design                       |  | cuboid design                   |
| Service voltage              |  | 15 ... 30 V DC                  |
| Operating distance           |  | 250 ... 2.500 mm                |
| Resolution                   |  | 0,1 % / Sn max.                 |
| Switching output             |  | Transistor pnp, 100 mA, NO (2x) |
| Operating frequency          |  | 120.000 Hz                      |
| Internal power consumption   |  | < 60 mA                         |
| Operating frequency          |  | 3 Hz                            |
| Accuracy                     |  | < 1 % / Sn max.                 |
| Response-/release time       |  | 200 ms / 120 ms (50% Sn max.)   |
| Switching hysteresis         |  | 40 mm                           |
| Ambient temperature          |  | -20 ... +50 °C                  |
| Temperature error            |  | 1 % (-20 ... +50°C)             |
| Insulation voltage endurance |  | 500 V                           |
| Protection class             |  | IP 67                           |
| Casing material              |  | polyamide                       |
| Connection                   |  | Connector, M8, 4-poled          |