

Schaltabstand S_n (Bezug St37)

- Hochflexibles Kabel
- Metallstecker
- Integrierter Verstärker
- Kurzschlusschutz
- Einschaltimpulsunterdrückung
- LED / Ring-LED

Abkürzungen

- S_n** = Nennschaltabstand
b = bündig in Metall
nb = nicht bündig in Metall
qb = quasi bündig in Metall
VA = rostfreier Stahl
Ms = Messing vernickelt
Ks = Kunststoff
Al = Aluminium eloxiert

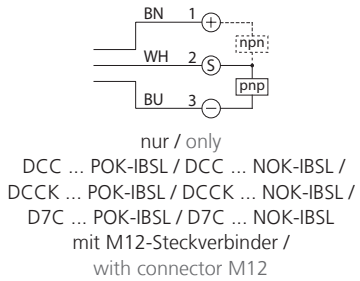
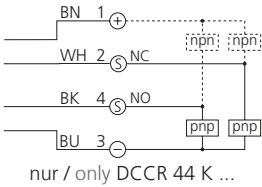
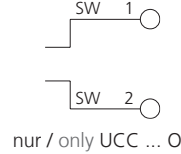
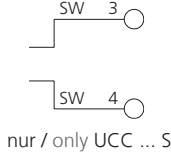
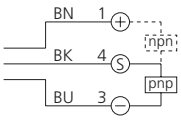
Operating distance S_n (ref. ST37)

- Cable, highly flexible
- Metal plug
- Integrated amplifier
- Short-circuit protection
- Starting pulse suppression
- LED / ring-LED

Abbreviations

- S_n** = Nominal operating distance
b = Flush-fitted in metal
nb = Non flush-fitted in metal
qb = Quasi flush-fitted in metal
VA = Stainless steel
Ms = Brass nickel-plated
Ks = Plastic
Al = Anodized aluminium

Anschlusschema Connection diagram



- BN** = Braun / brown
BK = Schwarz / black
BU = Blau / blue
WH = Weiß / white

Technische Daten (typ.)

Schaltabstand
Normmessplatte
Betriebsspannung
Ausgang / Ausgangsstrom
Eigenstromaufnahme
Spannungsfall
Schaltfrequenz
Schalthyserese
Umgebungstemperatur
Isolationsspannungsfestigkeit
Schutzart
Gehäusematerial
Kabel

Technical data (typ.) +20 °C, 24 VDC

Operating distance
Standard measuring plate
Service voltage
Output /output current
Internal power consumption
Voltage drop
Operating frequency
Switching hysteresis
Ambient temperature
Insulation voltage endurance
Protection class
Housing material
Cable

Bestelltabelle

DC pnp Schließer	
DC pnp Öffner	
DC npn Schließer	
DC npn Öffner	

Purchase order table

DC pnp NO	
DC pnp NC	
DC npn NO	
DC npn NC	

- Analogausgang
 Ausgangsschaltung nach NAMUR

- Analog output
 Output circuit acc. to NAMUR

Zubehör

- Anschlusskabel (separates Datenblatt)
 Anschlusskabel (separates Datenblatt)

Accessories

- Connection cables (separate data-sheet)
 Connection cables (separate data-sheet)

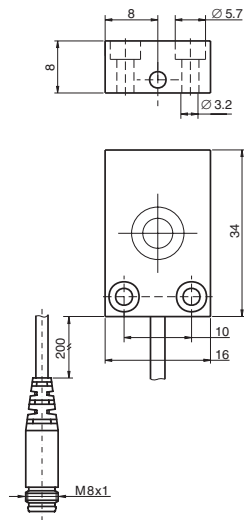
nb 8 mm

einstellbar, selbstkompensierend
adjustable, self-compensating



34 x 16 x 8 mm

Einbauhinweise siehe Seite 109 ¹⁰
Installation notes see page 109 ¹⁰



mm (typ.)
CAD ⇄
www.di-soric.de

einstellbar, selbstkompensierend / adjustable, self-compensating

12... 30 VDC

pnp / npn, 50 mA

< 10 mA

< 1,5 V

2 Hz

-30... +70 °C

500 V

IP 67

Ks (PP)

0,2 m, PUR

KDCR 16 K 08S PSK-K-TSL

KDCR 16 K 08S POK-K-TSL

KDCR 16 K 08S NSK-K-TSL

KDCR 16 K 08S NOK-K-TSL

-

TK...

-